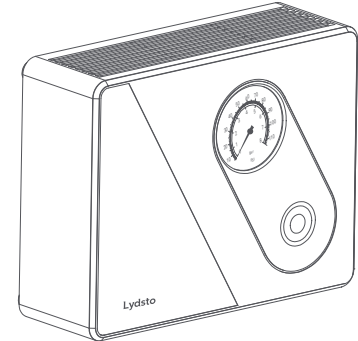
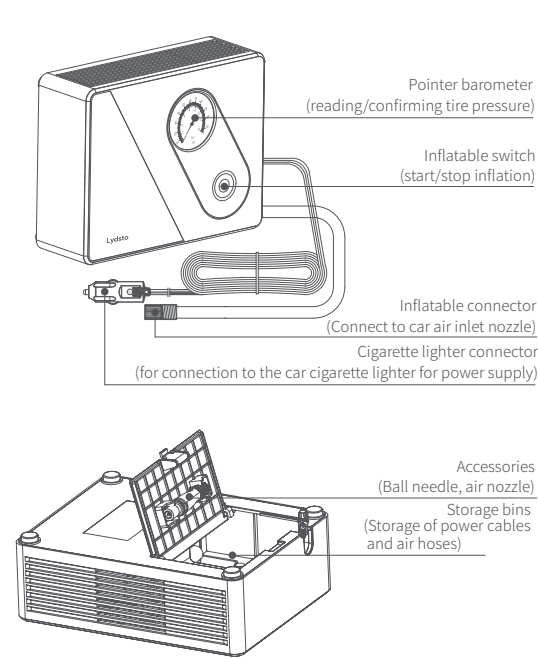


Car Inflator

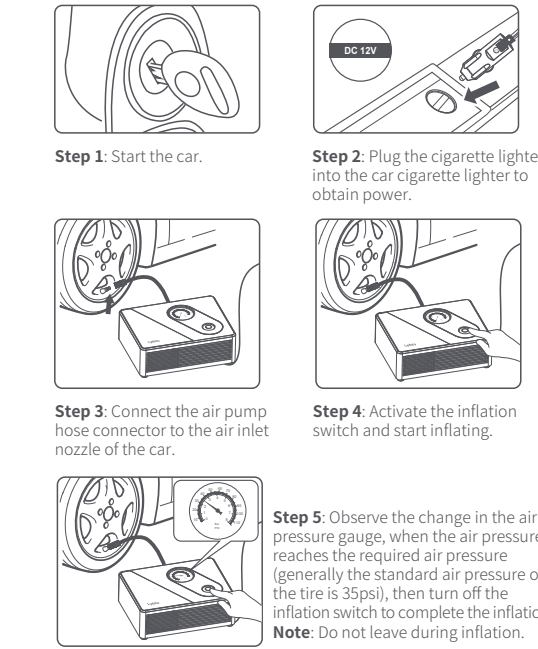


Thank you for purchasing our products! Please read the instructions carefully when using the product for the first time, it will guide you to use it correctly and remind you of relevant precautions. The picture is for reference only, and the product is subject to the actual product.

1 Schematic diagram of appearance



2 Operating steps



3 Product Parameter

Product name	Car Inflator
Product model	YM-CQB02
Rated power (35psi)	70W
Maximum pressure	≥80psi
Working current (35psi)	6A
Inflation speed	≤7.5+0.5min (195/65R15 tires: from 0-35psi)
Total length of wire	3000±100mm
Total length of air tube	500±15mm
Working temperature	-10℃~60℃
Product size	150*50*115mm
Product weight	505±20g
Accessories	Air nozzle, ball needle

4 Precautions

- 1.This product is not a toy. Do not allow children to use. Users no younger than 16 years old are suggested. Keep children a safe distance away from this product during inflation.
- 2.This product is supplied with DC12V, please do not use it at low voltage or over voltage.
- 3.When using this product, do not take power from the car charger converter, but take power directly from the vehicle power socket.
- 4.When using this product to inflate the vehicle, please start the vehicle first to enhance product performance and extend the vehicle battery life.
- 5.When the air inflator is working, some parts of the machine and the air hose may be hot. Please use it carefully to prevent burning your hands.
- 6.Do not leave the product while working and pay attention to the tire pressure value at any time. The correct tire pressure is important for driving safety. It may be dangerous when the tire pressure is low or overfull (for the tire pressure value, please refer to the side of the tire or the instructions for use of the car).
- 7.If the air pressure gauge value rises to high pressure rapidly during inflation, it means that the inflation tube may be plugged and the air has not entered the tire. Please check the connection of the inflation hose and whether the tire valve is correct.
- 8.The product and vehicle power plug should be kept dry. It may not conduct electricity or the current may be abnormal when it is wet or rusty.

- 9.The product has a built-in DC motor, which may generate electric sparks when working. Please do not use it in a flammable and explosive environment.
- 10.The continuous working time of the product cannot exceed 30 minutes. After 30 minutes of continuous working, it is recommended to halt for 20 minutes before continuing to use it. If there is abnormal noise or the temperature is too high during work, please switch off immediately.
- 11.Before setting the inflation pressure value, please confirm that the correct unit of measurement is selected, otherwise it may cause accidents such as a tire burst. Common unit conversion: 1Ba=100KPa.
- 12.Please use it in a safe area and put up warning signs before using at the roadside.
- 13.Do not insert the inflatable hose into the mouth, ears, eyes of people or animals. Do not use it as a toy.

5 Troubleshooting

Phenomenon	Cause/solution
Doesn't work	1. Check whether the equipment is powered up or the vehicle is started. 2. Check whether the power cable of the device is plugged in steadily. 3. Ensure that the car cigarette lighter plug is clean and free of debris. 4. Check whether the fuse of the power plug of the device is normal. 5. Check whether the air pressure value is abnormal.
The barometer does not display numbers / The barometric pressure value is inaccurate	1. Check the tightness of the connection between the inflation tube and the tire nozzle. (Some vehicles can't be connected too tightly, you can gradually loosen the interface for testing). 2. Check whether the air pressure unit is correct. When you encounter the above problems, you can let the inflation tube disconnect the tire inflation nozzle and the air inflator disconnect the power supply. After 5 seconds, reconnect and use the product.
The power plug or power cord is overheated	1.Check whether the power cord is curled, please unfold the cord completely. 2. Check whether the car power socket is clean and dry 3.If the working time is too long, please cool down and use

Manufacturer: Guangdong Yimu Technology Co., Ltd.
Address: Room 201, Building 1, No. 1, Dongsan Lane, Hengjiang, Fushan, Liaobu Town, Dongguan, Guangdong, China
Service line:+86 4000778387



- 技术要求:
- 1.展开尺寸:320*110mm
折后尺寸:80*110mm
 - 2.材质:128g双铜纸双面印刷
 - 3.注意:1234为正面, 567为背面
 - 4.颜色:PANTONE Cool Gray 11 C